

Win, What, Where

(c)1993 By [Basic Systems, Inc.](#)

[What Does Win, What, Where Do?](#)

[Main Window](#)

[View, Export Data](#)

[Merge, Export Data](#)

[Options](#)

[Samples of Output Files](#)

[License, Copyright Information](#)

[Association Of Shareware Professionals](#)

[About](#)

[Ordering](#)

[Registration](#)

[Version History](#)



[What Happened?](#)

About
Win, What, Where

(c)1993 By Basic Systems, Inc.

2103 West Canal Drive
Kennewick, WA 99336
(509) 735-2386 CIS: 70034, 1341

Main Window

The Main Window displays

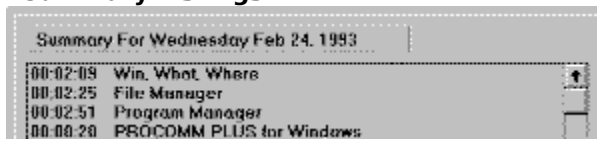
- Current Application and the time that its been active.
- Listing of todays activities in either Summary or Detail format.
- Summary information on todays times.

The screenshot shows a window titled "Win, What, Where" with a menu bar containing "File", "Options", and "Help". The main content area is divided into several sections:

- Current Application:** A box displays "Program Manager" and a timer shows "00:00:05". To the right is a colorful icon.
- Summary For Tuesday May 04, 1993:** A scrollable list of activities with columns for time and application name. The entry "00:20:50 Win, What, Where" is highlighted in cyan.
- Summary Totals:** Three boxes at the bottom show "Active 03:36:43", "Inactive 02:55:54", and "Total 06:32:37".

Time	Application
02:40:59	Inactive
00:20:50	Win, What, Where
00:04:56	Program Manager
00:03:03	PROCOMM PLUS for Windows
00:00:04	OPENPKT
00:03:37	WinQwk
00:00:06	Mega Edit 2.05
00:00:03	WinQwk - Onestop.qwk
00:00:03	CLOSEPKT
00:14:55	WWW Off
00:00:04	Plug-In for Program Manager
00:00:03	pcANYWHERE
00:00:28	pcANYWHERE Initializing...
00:03:10	pcANYWHERE Terminal
00:00:04	Online Menu
00:00:07	pcANYWHERE Disconnecting...
00:03:22	CompuServe Information Manager

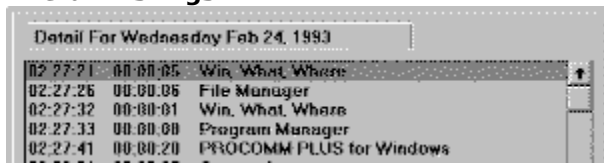
Summary Listings



Summary For Wednesday Feb 24, 1993	
00:02:09	Win, What, Where
00:02:25	File Manager
00:02:51	Program Manager
00:00:20	PROCOMM PLUS for Windows

The Summary Listing shows the total active time (1st column) and the name of the Task (either Caption or EXE format). Summary, Detail, Caption, and EXE are set from Options.

Detail Listings



Starting Time	Active Time	Task Name
02:27:21	00:00:05	Win. What. Where
02:27:26	00:00:05	File Manager
02:27:32	00:00:01	Win. What. Where
02:27:33	00:00:00	Program Manager
02:27:41	00:00:20	PROCOMM PLUS for Windows

The Detail Listing shows every task or activity in chronological order. Each listing shows starting time (1st Column), active time (2nd column), and the name of the Task (either Caption or EXE format). Summary, Detail, Caption, and EXE are set from Options.

Options

Use Options to set display or Detail or Summary, Caption or EXE, Inactivity logging, and Automatic Deletion of history files. [Click on the part of the window you want to know more about.](#)

Win. What. Where Options


Display

Detail
 Summary

Display **T**ype


Caption
 Program Name with Path
 Program Name Only

Inactivity

After  Minutes

Automatic Summary and Detail File Deletion

Don't Delete Files

Delete files after 
Weeks
Months

Display Options

Select Detail or Summary Listing.

Display Type

Select Caption or Program Name With Path or, Program Name Only.

Caption displays the Window Title

Program Name With Path displays the executable file including the path.

Program Name Only displays just the EXE name.

Inactivity

After this many minutes of inactivity, log the time as Inactive. Inactivity is time when there has been no keyboard or mouse action. [Win, What, Where](#) logs Screen Savers as Inactive. If [Win, What, Where](#) or Windows is ended, that time is logged as WWW Off. If the computer loses power or Windows is otherwise abnormally terminated the time is listed as Abnormal Windows Shutdown See [Time Outside of Windows](#).

Automatic Deletion

Summary and Detail files can grow forever unless they are occasionally deleted. This allows for automatic deletion after a set number of Days, Weeks, or Months. Another way to keep file size down is in File, Merge Export.

Oh, just forget it.

Well, Alright!

License Agreement, Copyright & Trademark Information

License Agreement and Warranty Disclaimer

You should carefully read the following terms and conditions before using this software. Use of this software indicates your acceptance of these terms and conditions. If you do not agree with them, do not use the software.

Shareware Version

You are hereby licensed to: use the Shareware Version of the software for a 31 day evaluation period; make as many copies of the Shareware version of this software and documentation as you wish; give exact copies of the original Shareware version to anyone; and distribute the Shareware version of the software and documentation in its unmodified form via electronic means. There is no charge for any of the above.

You are specifically prohibited from charging, or requesting donations, for any such copies, however made; and from distributing the software and/or documentation with other products (commercial or otherwise) without prior written permission, with one exception: Disk Vendors approved by the Association of Shareware Professionals are permitted to redistribute [Win, What, Where](#), subject to the conditions in this license, without specific written permission.

Unregistered use of [Win, What, Where](#) after the 31-day evaluation period is in violation of federal copyright laws.

Evaluation and Registration

This is not free software. This license allows you to use this software for evaluation purposes without charge for a period of 31 days. If you use this software after the 31 day evaluation period a registration fee of \$35 is required.

To Order [Win, What, Where](#), see [Ordering](#).

One registered copy of [Win, What, Where](#) may be dedicated to a single person who uses the software on one or more computers or to a single workstation used by multiple people.

You may access the registered version of [Win, What, Where](#) through a network, provided that you have obtained individual licenses for the software covering all workstations that will access the software through the network.

Disclaimer of Warranty

This software and the accompanying files are sold "as is" and without warranties as to performance of merchantability or any other warranties whether expressed or implied. Because of the various hardware and software environments into which [Win, What, Where](#) may be put, no warranty of fitness for a particular purpose is offered.

Good data processing procedure dictates that any program be thoroughly tested with non-critical data before relying on it. The user must assume the entire risk of using the program. Any liability of the seller will be limited exclusively to product replacement or refund of purchase price.

Copyright and Trademark Information

[Win, What, Where](#) (tm) is copyright (c) 1993 [Basic Systems, Inc.](#) All Rights Reserved.

Portions copyright (c) 1985-1992 Microsoft Corporation

Win, What, Where (tm) is a trademark of Basic Systems, Inc.

All other product names may be copyright and registered or unregistered trademarks / tradenames of their respective owners.

Save File As Text

Converts the displayed information to ASCII text. [Win](#), [What](#), [Where](#) supplies a default filename and gives you the option to change it.

Edit Copy, Cut**Copy**

Use this command to copy selected text onto the Clipboard. If you have no selected text, the entire file will be placed on the Clipboard. This information can then be pasted directly into another application.

Shortcut CTRL+C

Cut

Use this command to remove selected text and put it on the Clipboard.

Shortcut CTRL+T

Copying or Cutting to the Clipboard replaces the contents previously stored there. Changes made while in View, Export Data do not affect the actual data file.

Select Day(s)

Select Day (s) to process or view. Only days containing information for the selected Month, File Type, and Year are shown. If selecting files for View, Export then only one file may be selected, otherwise multiple files may be chosen.

Select File(s) Detail or Summary

Select Detail or Summary .

Select File(s) Month

Select the Month to Process or View. The default is the current month.

Select File(s) Directory & Drive

Select the Directory & Drive.

Select File(s) Year

Select the Year. The default is the current year.

Select File(s)

[Click on the part of the window you want to know more about.](#)

Select File(s)

File Type

Detail
 Summary

Display Type

Caption
 Program Name with Path
 Program Name Only

Month

Apr [v]

Year

1993 [v]

Path

- c:\
- vb
- task
- user**

Drive

c: [TEST] [v]

Day

- 01
- 02
- 03
- 04
- 06
- 07
- 08
- 09
- 10
- 11
- 13
- 14
- 15
- 16
- 17
- 18
- 19
- 20
- 21
- 23
- 24
- 25
- 26**
- 27
- 28
- 29
- 30

OK

Cancel

Days Selected 1

View, Export Data

Use this option to view individual Detail or Summary files. You may also place the data onto the Clipboard and export the information to an ASCII text file.

Opening Files

View: 050493.DET

File Edit Search

00:00:00	02:40:08	Inactive
02:40:08	00:00:22	Win, What, Where
02:40:30	00:00:08	Program Manager
02:40:38	00:03:03	PROCOMM PLUS for Windows
02:43:41	00:00:17	Win, What, Where
02:43:58	00:00:07	Program Manager
02:44:05	00:00:04	OPENPKT
02:44:09	00:03:37	WinQwk
02:47:46	00:00:06	Mega Edit 2.05
02:47:52	00:00:03	WinQwk - Onestop.qwk
02:47:56	00:00:03	CLOSEPKT
02:47:59	00:00:03	Win, What, Where
02:48:13	00:04:30	WWW Off
02:52:43	00:00:02	Plug-In for Program Manager
02:52:45	00:00:10	Program Manager
02:52:55	00:01:35	Win, What, Where
02:54:30	00:00:08	Program Manager
02:54:38	00:00:02	pcANYWHERE
02:54:40	00:00:28	pcANYWHERE Initializing...
02:55:08	00:00:01	pcANYWHERE
02:55:09	00:03:09	pcANYWHERE Terminal

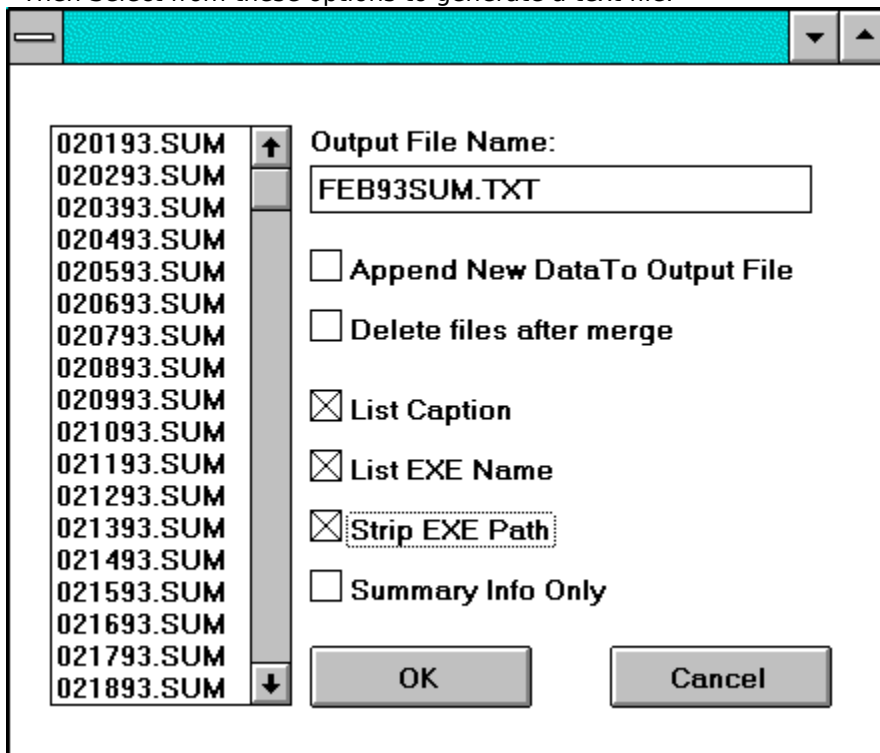
Active: 01:39:11 Inactive: 02:55:03 Total: 04:34:14

Merge, Export Data

This process enables you to extract information from a range of Detail or Summary files. The resulting information is then written or appended to an ASCII text file. The data may also be extracted into a comma delimited text file. This allows it to be read directly by programs such as Excel and Access.

First, Select The Files to be processed.

Then Select from these options to generate a text file.



[Click on the part of the window you want to know more about.](#)

[Click here to see sample output](#)

Merge, Export Selected Files
Displays files selected in step one.

Merge Export Output Filename

Win, What, Where will generate a file name for you. Use it or make changes.

Merge Export Append To File

If the selected output file exists, you will have the option to append the new information to the file.

Merge Export Delete After

Tells the program to delete the original data files after creating the ASCII text file.

Merge Export Caption EXE

Toggle these selections to create the format of the report.

[Caption](#) - Show the Caption on each line.

[EXE](#) - Include the EXEcutable name on each line

[Strip Path](#) - This will delete path information form an EXE listing. Note that EXE must be selected for this to have any effect.


[Show Summary Info Only](#) - Skips all detail and Summary Line Items.


[Comma Delimited Data File](#) - Generate file delimited by commas.

Registering Win, What, Where

As a benefit to you, [Win, What, Where](#) has been released as Shareware, so that you can try out the software on your system to see if it meets your needs "before you buy." If you make the determination that you would like [Win, What, Where](#) to become a part of your software library, you should take responsibility to pay for the product by registering it.

BENEFITS OF REGISTRATION:

- Diskette containing the latest version of [Win, What, Where](#)
- Free bonus utility  [What Happened?](#)
- Registration information on About screen
- No shareware registration screen
- Technical support
- Upgrade protection
- Total Customer Satisfaction guarantee

When you register [Win, What, Where](#) you will receive a Registration Name & Number & a diskette containing the latest version of [Win, What, Where](#) along with a copy of  [What Happened?](#)

Your name and/or company name will appear on the About screen, but your copy of [Win, What, Where](#) will otherwise be free from start-up screens or registration screens of any kind.

Registered users are eligible for Technical Support via CompuServe, fax, or by telephone.

Upgrade protection! When you register [Win, What, Where](#) you will receive the most recent version, but we are always improving the product. At some point in the future you may find a newer (later) version of [Win, What, Where](#) out as shareware. Registered users can just install the newer shareware version, enter the Registration Name & Number from the older version and consider your new version registered! The new software will display your name and company information on the About screen and will eliminate any registration screens. This feature will work for all new shareware versions at least up until the next major release.

We strive for Total Customer Satisfaction and will happily refund your money, including shipping and handling charges, if for any reason you are unsatisfied with our product - you do not have to return the product.

To Order [Win, What, Where](#), see [Ordering](#).

Ordering

Ordering By Check

Ordering By Credit Card

Ordering with CompuServe's Software Registration Service

Site licenses

A site license for [Win, What, Where](#) entitles an organization to duplicate the distribution disk for the specified number of copies. Contact [Basic Systems](#) for more information.

Upgrades

To upgrade a registered copy of [Win, What, Where](#), see the section titled [Upgrades](#).

Upgrades

Upgrade protection! We are always improving [Win, What, Where](#). At some point in the future you may find a newer (later) version of [Win, What, Where](#) out as shareware. Registered users can just install the newer shareware version, enter the Registration Name & Number from the older version and consider your new version registered! The new software will display your name and company information on the About screen and will eliminate any registration screens. This feature will work for all new shareware versions at least up until the next major release.

Order Form

To print this order form, click on Print Topic in the File pull-down menu.

To order by check send this order form and a check to

Basic Systems, Inc.
2103 West Canal Drive
Kennewick, WA 99336

Payments must be in US dollars drawn on a US bank.

Prices guaranteed through December 1993.

Win, What, Where	Quantity ____ @ \$ 35.00 ea. =	_____
Washington State residents add 7.8% (\$2.73 per copy) Tax +		_____
Shipping and Handling (per order)	+ \$2.00	_____
	Total payment	_____

Name: _____ Date: _____

Company: _____

Registration Name To Use: _____

Address: _____

City, State, Zip: _____

Country: _____

Day Phone: _____ Eve: _____

CompuServe ID: _____

Diskette Size: ____ 3.5 ____ 5.25

How did you hear about Win, What, Where? _____

Comments:

Time Outside of Windows

This is time when Windows has been ended or WWW is off. It is entered automatically as WWW Off. If the computer loses power or Windows is otherwise abnormally terminated, the time is logged as Abnormal Windows Shutdown.

What Does It Do?

When a program was started and how long it ran.

What was running. List activities by Program Name & Window Caption

Where the program was and its associated files, if available.

Monitor Productivity - Automatically accumulate the time spent on a project.

Track Computer Usage for Home Offices - Log computer time for tax purposes.

Monitor Accesses - Find out whats been going on while you were away.

Time & Billing - Use *Win, What, Wheres* exporting facilities to generate billings without having to manually keep track of your hours.

Customer Support - Use *Win, What, Wheres* History features to recreate and analyze customer problems.

Memory Jogger - Find the name of that document you wrote last month.

Features

- View Activities by Window Caption or Executable name.
- Summary and Detail listings
- Automatic history deletion after a number of days, weeks, or months.
- Group any number of days in a month to generate reports.
- Summarize grouped information by
 - Number of times a program was executed with total time.
 - Total Active and Inactive time
 - Summary information for each day

Or, show the complete detail of every activity.

Win, What, Where wont get in the way. Minimize it and forget it. Your time and activities are recorded automatically.

Sample Reports

Example of file:

```
Summary For 02/05/93
00:18:44      Win, What, Where
00:24:58      Program Manager
00:21:22      Richland
00:02:45      Microsoft Word - CONTRACT3.DOC
00:22:12      Mega Edit 2.05
00:00:12      MakeASM
```

[ETC.,]

```
Summary For 02/06/93
00:15:48      Win, What, Where
00:00:31      Clock
00:10:09      File Manager
00:02:57      Program Manager
00:04:25      PROCOMM PLUS for Windows
```

[ETC.,]

Date	Total	Active	Inactive
02/05/93	10:02:14	05:05:05	04:57:09
02/06/93	04:13:51	02:33:21	01:40:30
02/07/93	00:04:30	04:52:30	04:48:00
02/08/93	14:05:42	08:04:09	06:01:33
02/09/93	14:09:01	07:10:51	06:58:10
02/10/93	15:12:35	08:23:49	06:48:46
02/11/93	13:45:05	07:45:14	05:59:51
02/12/93	10:01:55	06:50:38	03:11:17
02/13/93	08:27:22	03:46:01	04:41:21
Total:	090:01:15	054:01:38	035:12:37

The Reports also contain sections summarizing activity by Caption

Times	Caption	Total
28	Win, What, Where	7:54:37
28	Program Manager	8:49:11
28	PROCOMM PLUS for Windows	7:02:30
28	Mega Edit 2.05	7:46:24
5	Windows ASPECT Files	00:21
26	WinQwk	3:23:15
26	OPENPKT	02:28
21	WinQwk - ONESTOP.QWK	37:04
26	CLOSEPKT	01:31
17	PCPLUS/Win	1:59:02
21	Richland	7:45:59
22	Microsoft Word - Document1	4:40:12

And, by EXE name:

28	WWW.EXE	7:54:37
28	PROGMAN.EXE	8:49:11
67	PW.EXE	10:52:57
28	MEGAEDIT.EXE	7:46:24

188	USER.EXE	56:46
77	WINQWK.EXE	4:10:44
199	WINOA386.MOD	40:12:59
129	WINWORD.EXE	45:50:44
6	EXCEL.EXE	1:21:17
2	YEAR.EXE	01:41
28	WINFILE.EXE	7:27:23
121	WINHELP.EXE	4:43:46
33	PBRUSH.EXE	1:23:03

Example of comma delimited file with stripped EXE name.

Times,EXE,Total

19,CLOCK.EXE,1:46:24

19,WWW.EXE,6:05:18

19,PROGMAN.EXE,5:09:35

19,WINFILE.EXE,6:22:42

10,PBRUSH.EXE,02:32

130,USER.EXE,1:35:42

21,WINCIM.EXE,8:21:00

17,Inactive,50:36:41

100,WINZIP.EXE,1:02:44

Order By Credit Card

CREDIT CARD ORDERS ONLY

You can order with MC, Visa, Amex, or Discover from Public (software) Library by calling 800-2424-PsL or 713-524-6394 or by FAX to 713-524-6398 or by CIS Email to 71355,470. You can also mail credit card orders to PsL at P.O.Box 35705, Houston, TX 77235-5705.

THE ABOVE NUMBERS ARE FOR ORDERS ONLY

Any questions about the status of the shipment of the order, refunds, registration options, product details, technical support, volume discounts, dealer pricing, site licenses, etc, must be directed to Basic Systems, Inc.

To insure that you get the latest version, PsL will notify us the day of your order and we will mail the latest version with a Registration Name and Number directly to you. If you have a CompuServe ID, we will also EMail you a message with the registration information.

Ordering with CIS Software Registration

Ordering with CompuServe's Software Registration Service

Enter **GO SWREG** at the ! prompt and follow the menus. The registration ID is **982**.



Association Of Shareware Professionals (ASP)

ASP -- What is it

ASP, the Association of Shareware Professionals, was formed in April 1987 to strengthen the future of shareware (user supported software) as an alternative to commercial software. Its members, all of whom are programmers who subscribe to a code of ethics or are non-programmers sincerely interested in the advancement of shareware, are committed to the concept of shareware as a method of marketing.

ASP's primary goals are:

- To inform users about shareware programs and about shareware as a method of distributing and marketing software;
- To encourage broader distribution of shareware through user groups and disk dealers who agree to identify and explain the nature of shareware;
- To assist members in marketing their software;
- To provide a forum through which ASP members may communicate, share ideas, and learn from each other; and
- To foster a high degree of professionalism among shareware authors by setting programming, marketing and support standards for ASP members to follow.

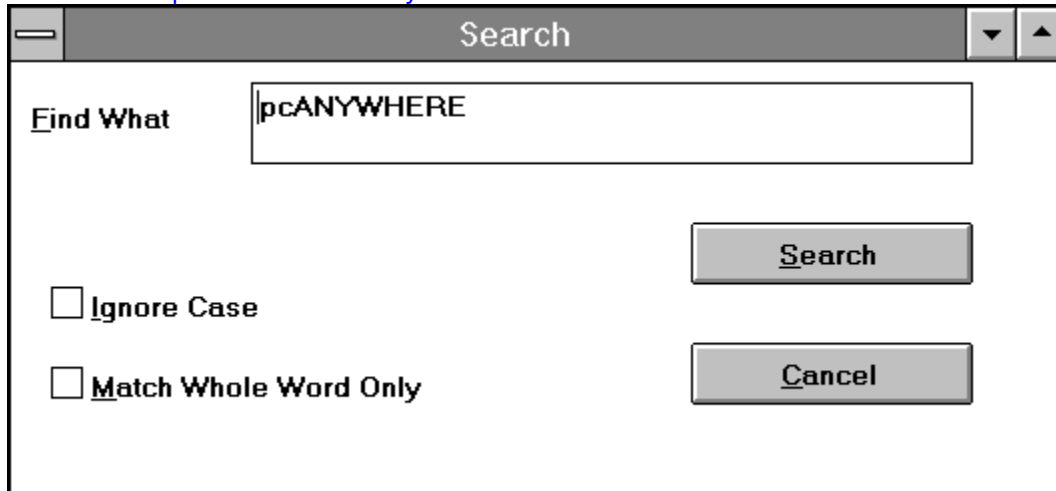
ASP Ombudsman Information

This program is produced by a member of the Association of Shareware Professionals (ASP). ASP wants to make sure that the shareware principle works for you. If you are unable to resolve a shareware-related problem with an ASP member by contacting the member directly, ASP may be able to help. The ASP Ombudsman can help you resolve a dispute or problem with an ASP member, but does not provide technical support for members' products. Please write to the ASP Ombudsman at 545 Grover Road, Muskegon, MI 49442-9427 or send a CompuServe message via CompuServe Mail to ASP Ombudsman 70007,3536.

Search

Search will select and display records from the selected day based on the set parameters.

[Click on the part of the window you want to know more about.](#)



The image shows a standard Windows-style dialog box titled "Search". The title bar is grey and contains the text "Search" in the center, with a minimize button on the left and maximize and close buttons on the right. The main area of the dialog is white. On the left side, the text "Find What" is followed by a text input field containing the text "pcANYWHERE". Below this, there are two checkboxes: "Ignore Case" and "Match Whole Word Only", both of which are currently unchecked. To the right of these checkboxes are two buttons: "Search" and "Cancel".

Search Find

Enter the text to search. If a record has been selected, a best guess will be placed here automatically.

Ignore Case

Set this option to perform a case insensitive search.

Whole Word

Setting this option will return only records containing the whole word specified.

Search Results

After the search is completed, the results are displayed.

View: 050493.DET		
File	Edit	Search
02:54:38	00:00:02	pcANYWHERE
02:54:40	00:00:28	pcANYWHERE Initializing...
02:55:08	00:00:01	pcANYWHERE
02:55:09	00:03:09	pcANYWHERE Terminal
02:58:22	00:00:01	pcANYWHERE Terminal
02:58:23	00:00:07	pcANYWHERE Disconnecting...

Active: 01:48:34 Inactive: 02:55:03 Total : 04:43:37

Sum Selected

Pressing the Sum Selected button will add and display the total time for the selected records.

View: 050493.DET		
File	Edit	Search
02:54:38	00:00:02	pcANYWHERE
02:54:40	00:00:28	pcANYWHERE Initializing...
02:55:08	00:00:01	pcANYWHERE
02:55:09	00:03:09	pcANYWHERE Terminal
02:58:22	00:00:01	pcANYWHERE Terminal
02:58:23	00:00:07	pcANYWHERE Disconnecting...

Active: 01:51:53 Inactive: 02:55:03 Total : 04:46:56 **Sum Selected** 00:03:48

Edit Text

Selected text may be Cut & Pasted to the clipboard or, the time for the selected items may be summed by pressing the Sum Selected button.

Time Displays

Displays times for entire day.

View:

File Edit Search

Open	:08	Inactive
Save as Text	:22	Win, What, Where
Exit	:08	Program Manager
	:03	PROCOMM PLUS for W
02:43:41	00:00:17	Win, What, Where
02:43:58	00:00:07	Program Manager
02:44:05	00:00:04	OPENPKT
02:44:09	00:03:37	WinQwk
02:47:46	00:00:06	Mega Edit 2.05

Current Day Display

Displays today's activity in either Detail or Summary format.

Previous Task

The last task is highlighted

File

View, Export Data

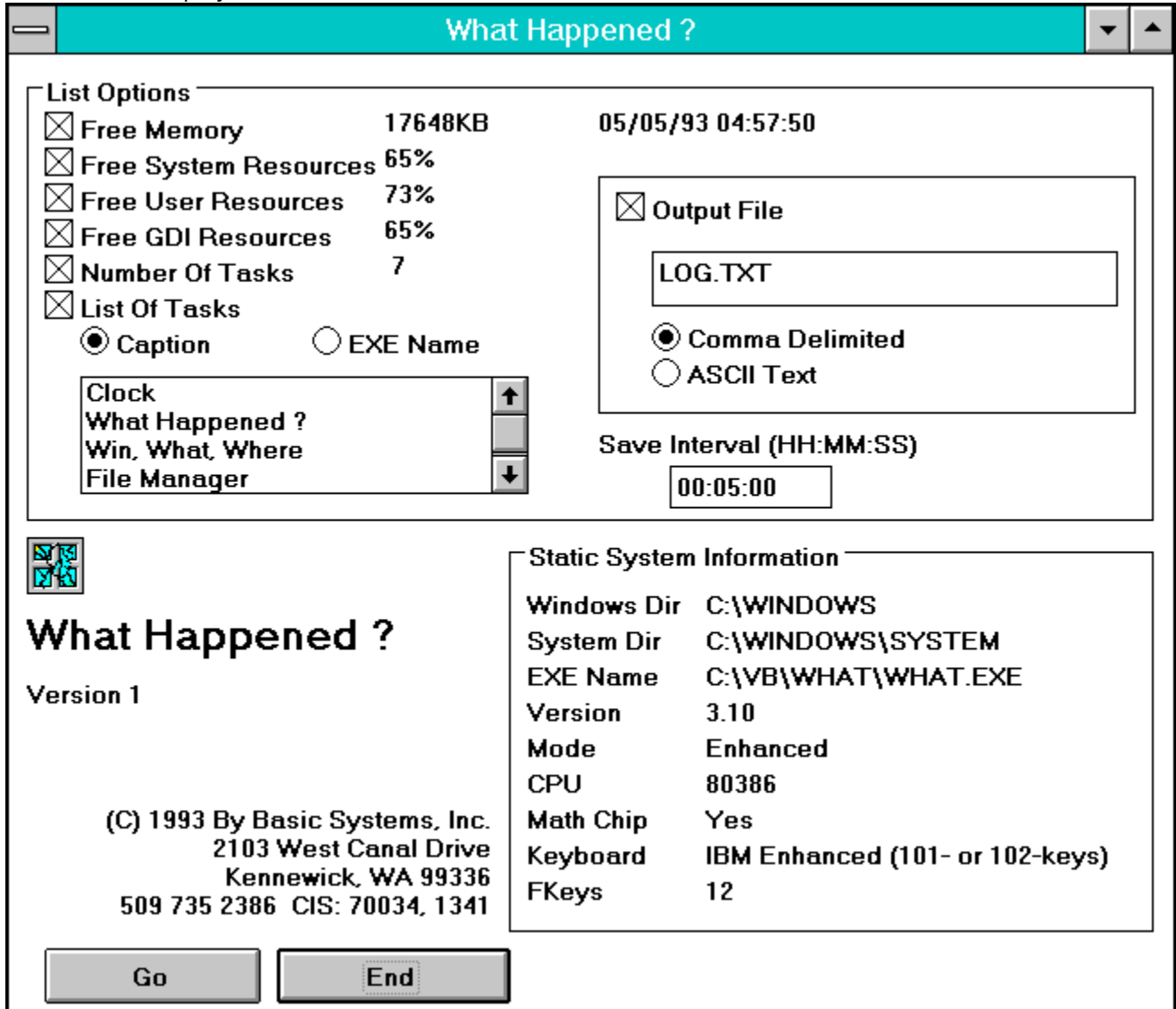
Merge, Export Data

What Happened?

This unique utility takes a snapshot of your system at timed intervals. This is especially useful when Windows is not behaving. You will be able to see system resources and what programs are running.

What Happened? is **FREE!** when you register Win, What Where!

Click on the display to find out more!



What Happened ?

Version 1

(C) 1993 By Basic Systems, Inc.
2103 West Canal Drive
Kennewick, WA 99336
509 735 2386 CIS: 70034, 1341

Static System Information

Windows Dir	C:\WINDOWS
System Dir	C:\WINDOWS\SYSTEM
EXE Name	C:\VB\WHAT\WHAT.EXE
Version	3.10
Mode	Enhanced
CPU	80386
Math Chip	Yes
Keyboard	IBM Enhanced (101- or 102-keys)
FKeys	12

Go End

[What Happened Output](#)

List Options

Choose any or all of these system indicators to include in the output.

Output File

What Happened? will write the information to an ASCII file in either comma delimited or standard (seperated by tabs) format.

Timed Interval

Set the interval to take the snapshot

This is supposed to be a broken Window

Free when you register Win, What, Where!

Static System Information

Useful additional information is supplied.

Running What Happened?

Sample output from What Happened?

What Happened ?

List Options

Free Memory 17260KB

Free System Resources 63%

Free User Resources 73%

Free GDI Resources 63%

Number Of Tasks 6

List Of Tasks

Caption EXE Name

Program Manager ↑
 What Happened ?
 Win. What. Where
 Plug-In for Program Manager ↓

05/05/93 05:11:48

Output File

LOG.TXT

Comma Delimited
 ASCII Text

Save Interval (HH:MM:SS)

00:0:30

Date Time	Memory	Sys	User	GDI	Tasks	List Of Tasks	
05/05/93 05:02:00	17098	65%	73%	65%	7	Clock	Wh:
05/05/93 05:02:42	16697	54%	67%	54%	9	Clock	Wh:
05/05/93 05:03:22	16528	49%	63%	49%	10	Clock	Wh:
05/05/93 05:03:55	17093	63%	73%	63%	7	Clock	Wh:
05/05/93 05:04:42	16207	55%	63%	55%	8	Clock	Mic
05/05/93 05:05:14	16215	55%	63%	55%	8	Clock	Mic
05/05/93 05:05:46	16904	55%	68%	55%	7	Clock	Mic
05/05/93 05:06:18	16912	57%	69%	57%	6	Microsoft Acc	
05/05/93 05:06:52	17778	65%	73%	65%	5	Program Man	
05/05/93 05:07:23	17778	65%	73%	65%	5	File Manager	
05/05/93 05:08:08	17774	67%	70%	67%	6	Format Disk	

←
Go
End
→

Version History

6/6/93 - Version 1.0 Initial release.

6/12/93 - Version 1.01 Maintenance Release -

Merge Export. If caption contained commas, export data delimited with commas would fail. Added routine to strip commas from captions if export to comma delimited file.

Help File - Fixed minor font problems. Added reference to CIS SWREG ID.

Added VENDOR.DOC, README.DOC, PACKING.LST, and FILE_ID.DIZ to distributed zip file. (WWW11.ZIP)

